







Building A



Building A | - Ground Floor



AS01 | 1BD

INTERNAL AREA (SQM)	41,08
EXTERNAL AREA (SQM)	2,73
PRICE	SOLD

AS02 | 1BD

INTERNAL AREA (SQM)	40,62
EXTERNAL AREA (SQM)	2,73
PRICE	SOLD

AS03 | 1BD

INTERNAL AREA (SQM)	40,82
EXTERNAL AREA (SQM)	2,73
PRICE	SOLD

AS01 | 1BD

INTERNAL AREA (SQM)	49,96
EXTERNAL AREA (SQM)	
PRICE	SOLD

PARKSIDE RESIDENCES BY SOLUM

DISCLAIMER: Reference to any measured area or definition is in accordance with International Property Measurement Standards (IPMS) published by the International Property Measurement Standards Coalition (IPMSC). The Net Internal Area comprises internal floor space and outdoor areas, excluding internal and external walls, and other structural elements. The Total Sellable Area encompasses all internal and external spaces, including all walls, columns and structural elements. Apartment designs and layouts presented are indicative and subject to change. The specifications are as of the brochure's preparation date and may be adjusted in accordance with permitted variances under apartment sale contracts. Floorplans are not to scale, provided for guidance only, and dimensions are approximate sizes.

Building A | Ground Floor



A001 | 1BD

INTERNAL AREA (SQM)	44,50
EXTERNAL AREA (SQM)	
PRICE	SOLD

A002 | 1BD

INTERNAL AREA (SQM)	44,97
EXTERNAL AREA (SQM)	
PRICE	SOLD

A003 | 1BD

INTERNAL AREA (SQM)	40,81
EXTERNAL AREA (SQM)	
PRICE	SOLD

A004 | 1BD

INTERNAL AREA (SQM)	49,96
EXTERNAL AREA (SQM)	
PRICE	SOLD

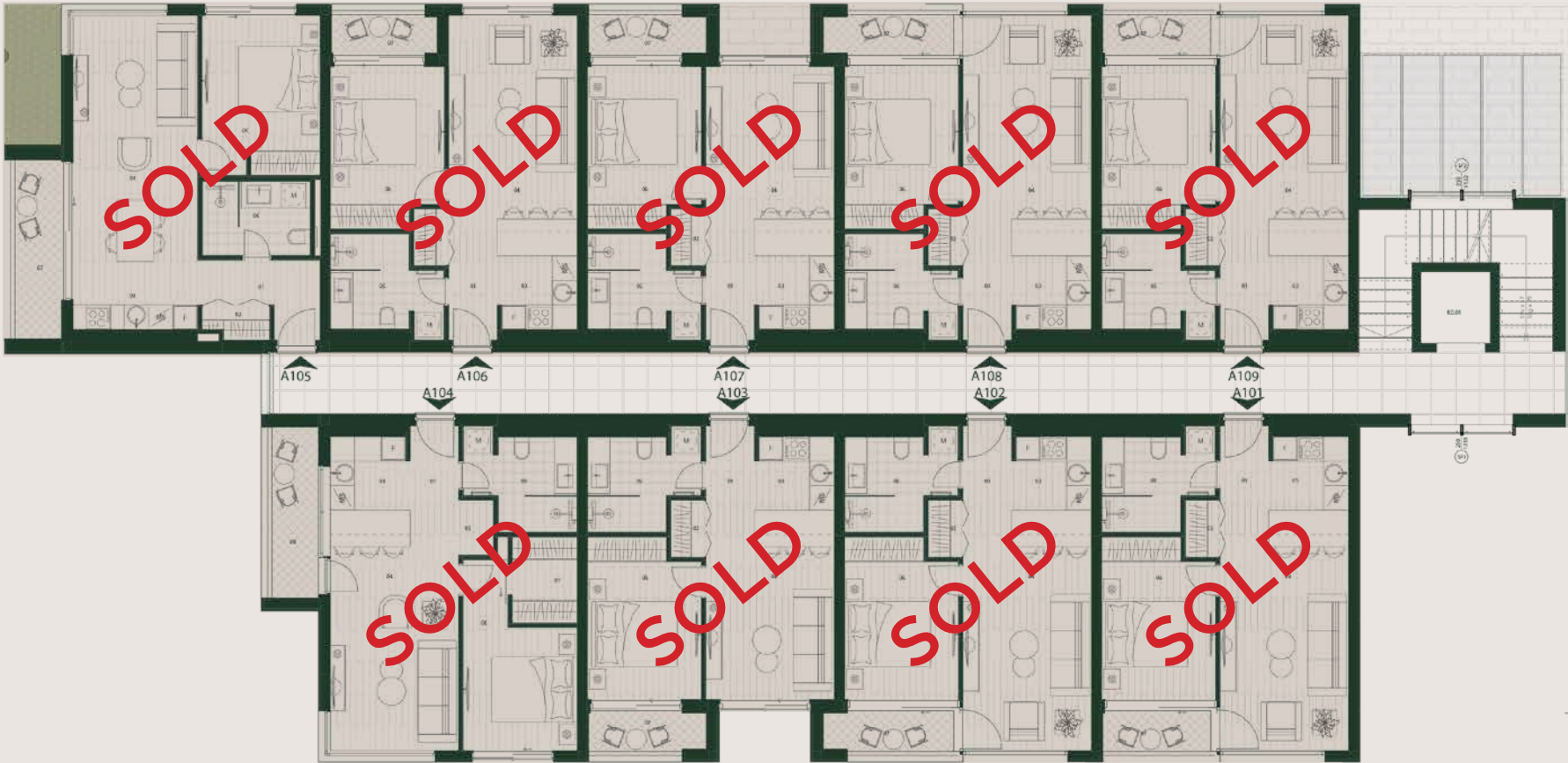
A005 | 2BD

INTERNAL AREA (SQM)	70,84
EXTERNAL AREA (SQM)	
PRICE	SOLD

PARKSIDE RESIDENCES BY SOLUM

DISCLAIMER: Reference to any measured area or definition is in accordance with International Property Measurement Standards (IPMS) published by the International Property Measurement Standards Coalition (IPMSC). The Net Internal Area comprises internal floor space and outdoor areas, excluding internal and external walls, and other structural elements. The Total Sellable Area encompasses all internal and external spaces, including all walls, columns and structural elements. Apartment designs and layouts presented are indicative and subject to change. The specifications are as of the brochure's preparation date and may be adjusted in accordance with permitted variances under apartment sale contracts. Floorplans are not to scale, provided for guidance only, and dimensions are approximate sizes.

Building A | First Floor



A101 1BD		A102 1BD		A103 1BD		A104 1BD		A105 1BD		A106 1BD	
INTERNAL AREA (SQM)	44,50	INTERNAL AREA (SQM)	44,97	INTERNAL AREA (SQM)	40,81	INTERNAL AREA (SQM)	49,92	INTERNAL AREA (SQM)	50,16	INTERNAL AREA (SQM)	44,48
EXTERNAL AREA (SQM)		EXTERNAL AREA (SQM)		EXTERNAL AREA (SQM)		EXTERNAL AREA (SQM)		EXTERNAL AREA (SQM)		EXTERNAL AREA (SQM)	
PRICE	SOLD	PRICE	SOLD	PRICE	SOLD	PRICE	SOLD	PRICE	SOLD	PRICE	SOLD

A107 1BD		A108 1BD		A109 1BD		A110 1BD	
INTERNAL AREA (SQM)	40,81	INTERNAL AREA (SQM)	44,97	INTERNAL AREA (SQM)	44,50	INTERNAL AREA (SQM)	44,50
EXTERNAL AREA (SQM)		EXTERNAL AREA (SQM)		EXTERNAL AREA (SQM)		EXTERNAL AREA (SQM)	
PRICE	SOLD	PRICE	SOLD	PRICE	SOLD	PRICE	SOLD

PARKSIDE RESIDENCES BY SOLUM

DISCLAIMER: Reference to any measured area or definition is in accordance with International Property Measurement Standards (IPMS) published by the International Property Measurement Standards Coalition (IPMSC). The Net Internal Area comprises internal floor space and outdoor areas, excluding internal and external walls, and other structural elements. The Total Sellable Area encompasses all internal and external spaces, including all walls, columns and structural elements. Apartment designs and layouts presented are indicative and subject to change. The specifications are as of the brochure's preparation date and may be adjusted in accordance with permitted variances under apartment sale contracts. Floorplans are not to scale, provided for guidance only, and dimensions are approximate sizes.

Building A | Second Floor



A201 1BD		A202 2BD		A203 2BD		A204 2BD		A205 2BD		A206 1BD	
INTERNAL AREA (SQM)	44,50	INTERNAL AREA (SQM)	64,00	INTERNAL AREA (SQM)	70,41	INTERNAL AREA (SQM)	69,94	INTERNAL AREA (SQM)	63,90	INTERNAL AREA (SQM)	44,97
EXTERNAL AREA (SQM)		EXTERNAL AREA (SQM)		EXTERNAL AREA (SQM)		EXTERNAL AREA (SQM)		EXTERNAL AREA (SQM)		EXTERNAL AREA (SQM)	
PRICE	SOLD	PRICE	SOLD	PRICE	SOLD	PRICE	SOLD	PRICE	SOLD	PRICE	SOLD

A207 1BD	
INTERNAL AREA (SQM)	SOLD
EXTERNAL AREA (SQM)	
PRICE	SOLD

PARKSIDE RESIDENCES BY SOLUM

DISCLAIMER: Reference to any measured area or definition is in accordance with International Property Measurement Standards (IPMS) published by the International Property Measurement Standards Coalition (IPMSC). The Net Internal Area comprises internal floor space and outdoor areas, excluding internal and external walls, and other structural elements. The Total Sellable Area encompasses all internal and external spaces, including all walls, columns and structural elements. Apartment designs and layouts presented are indicative and subject to change. The specifications are as of the brochure's preparation date and may be adjusted in accordance with permitted variances under apartment sale contracts. Floorplans are not to scale, provided for guidance only, and dimensions are approximate sizes.

Building A | Third Floor



A301 | 1BD

INTERNAL AREA (SQM)	44,50
EXTERNAL AREA (SQM)	
PRICE	SOLD

A302 | 2BD

INTERNAL AREA (SQM)	64,00
EXTERNAL AREA (SQM)	
PRICE	SOLD

A303 | 2BD

INTERNAL AREA (SQM)	70,46
EXTERNAL AREA (SQM)	
PRICE	SOLD

A304 | 3BD

INTERNAL AREA (SQM)	93,12
EXTERNAL AREA (SQM)	
PRICE	SOLD

A305 | 1BD

INTERNAL AREA (SQM)	40,82
EXTERNAL AREA (SQM)	
PRICE	SOLD

A306 | 1BD

INTERNAL AREA (SQM)	44,97
EXTERNAL AREA (SQM)	
PRICE	SOLD

A307 | 1BD

INTERNAL AREA (SQM)	44,50
EXTERNAL AREA (SQM)	
PRICE	SOLD

PARKSIDE RESIDENCES BY SOLUM

DISCLAIMER: Reference to any measured area or definition is in accordance with International Property Measurement Standards (IPMS) published by the International Property Measurement Standards Coalition (IPMSC). The Net Internal Area comprises internal floor space and outdoor areas, excluding internal and external walls, and other structural elements. The Total Sellable Area encompasses all internal and external spaces, including all walls, columns and structural elements. Apartment designs and layouts presented are indicative and subject to change. The specifications are as of the brochure's preparation date and may be adjusted in accordance with permitted variances under apartment sale contracts. Floorplans are not to scale, provided for guidance only, and dimensions are approximate sizes.

Building A | Fourth Floor



A401 | PENTHOUSE

INTERNAL AREA (SQM)	44,50
EXTERNAL AREA (SQM)	
PRICE	SOLD

A402 | 2B

INTERNAL AREA (SQM)	88,44
EXTERNAL AREA (SQM)	90,55
PRICE	SOLD

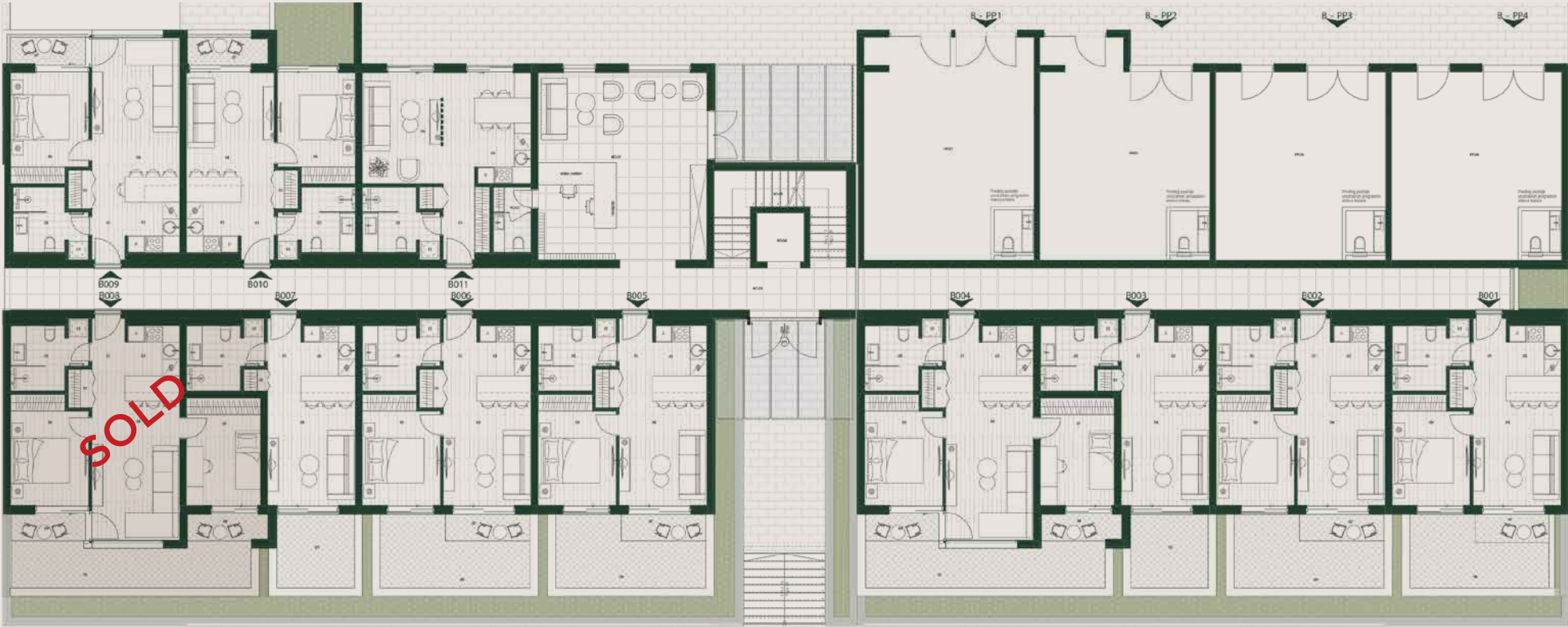
PARKSIDE RESIDENCES BY SOLUM

DISCLAIMER: Reference to any measured area or definition is in accordance with International Property Measurement Standards (IPMS) published by the International Property Measurement Standards Coalition (IPMSC). The Net Internal Area comprises internal floor space and outdoor areas, excluding internal and external walls, and other structural elements. The Total Sellable Area encompasses all internal and external spaces, including all walls, columns and structural elements. Apartment designs and layouts presented are indicative and subject to change. The specifications are as of the brochure's preparation date and may be adjusted in accordance with permitted variances under apartment sale contracts. Floorplans are not to scale, provided for guidance only, and dimensions are approximate sizes.

Building B



Building B | Ground Floor



B001 1BD		B002 1BD		B003 S		B004 2BD		B005 1BD		B006 1BD	
INTERNAL AREA (SQM)	40,79	INTERNAL AREA (SQM)	47,24	INTERNAL AREA (SQM)	27,06	INTERNAL AREA (SQM)	57,46	INTERNAL AREA (SQM)	41,30	INTERNAL AREA (SQM)	41,24
EXTERNAL AREA (SQM)	11,44	EXTERNAL AREA (SQM)	12,24	EXTERNAL AREA (SQM)	7,92	EXTERNAL AREA (SQM)	15,32	EXTERNAL AREA (SQM)	12,35	EXTERNAL AREA (SQM)	12,24
PRICE	153.700€	PRICE	159.000€	PRICE	116.600€	PRICE	227.900€	PRICE	159.000€	PRICE	159.000€

B007 S		B008 2BD		B009 1BD		B010 1BD		B011 S	
INTERNAL AREA (SQM)	27,06	INTERNAL AREA (SQM)	57,41	INTERNAL AREA (SQM)	44,35	INTERNAL AREA (SQM)	40,81	INTERNAL AREA (SQM)	34,85
EXTERNAL AREA (SQM)	7,92	EXTERNAL AREA (SQM)	15,21	EXTERNAL AREA (SQM)		EXTERNAL AREA (SQM)		EXTERNAL AREA (SQM)	
PRICE	116.600€	PRICE	SOLD	PRICE	150.520€	PRICE	137.800€	PRICE	111.300€

PARKSIDE RESIDENCES BY SOLUM

DISCLAIMER: Reference to any measured area or definition is in accordance with International Property Measurement Standards (IPMS) published by the International Property Measurement Standards Coalition (IPMSC). The Net Internal Area comprises internal floor space and outdoor areas, excluding internal and external walls, and other structural elements. The Total Sellable Area encompasses all internal and external spaces, including all walls, columns and structural elements. Apartment designs and layouts presented are indicative and subject to change. The specifications are as of the brochure's preparation date and may be adjusted in accordance with permitted variances under apartment sale contracts. Floorplans are not to scale, provided for guidance only, and dimensions are approximate sizes.

Building B | First Floor



B101 2BD	B102 S	B103 1BD	B104 1BD	B105 1BD	B106 1BD
INTERNAL AREA (SQM)	INTERNAL AREA (SQM)	INTERNAL AREA (SQM)	INTERNAL AREA (SQM)	INTERNAL AREA (SQM)	INTERNAL AREA (SQM)
57,21	27,06	44,97	44,50	44,50	44,97
EXTERNAL AREA (SQM)	EXTERNAL AREA (SQM)	EXTERNAL AREA (SQM)	EXTERNAL AREA (SQM)	EXTERNAL AREA (SQM)	EXTERNAL AREA (SQM)
PRICE	PRICE	PRICE	PRICE	PRICE	PRICE
196.100€	100.700€	153.700€	153.700€	SOLD	SOLD

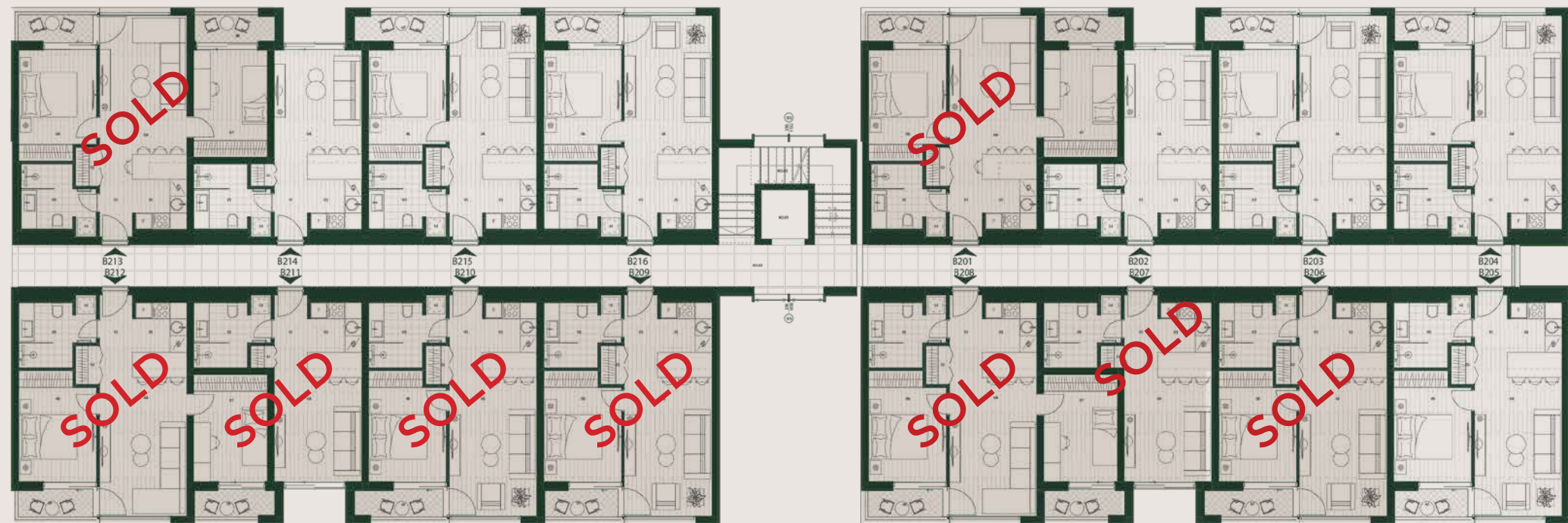
B107 S	B108 2BD	B109 1BD	B110 1BD	B111 S	B112 2BD
INTERNAL AREA (SQM)	INTERNAL AREA (SQM)	INTERNAL AREA (SQM)	INTERNAL AREA (SQM)	INTERNAL AREA (SQM)	INTERNAL AREA (SQM)
27,06	57,41	44,50	44,97	27,06	57,41
EXTERNAL AREA (SQM)	EXTERNAL AREA (SQM)	EXTERNAL AREA (SQM)	EXTERNAL AREA (SQM)	EXTERNAL AREA (SQM)	EXTERNAL AREA (SQM)
PRICE	PRICE	PRICE	PRICE	PRICE	PRICE
100.700€	SOLD	SOLD	SOLD	SOLD	SOLD

B113 2BD	B114 S	B115 1BD	B116 1BD
INTERNAL AREA (SQM)	INTERNAL AREA (SQM)	INTERNAL AREA (SQM)	INTERNAL AREA (SQM)
57,21	27,06	45,03	44,50
EXTERNAL AREA (SQM)	EXTERNAL AREA (SQM)	EXTERNAL AREA (SQM)	EXTERNAL AREA (SQM)
PRICE	PRICE	PRICE	PRICE
196.100€	100.700€	153.700€	153.700€

PARKSIDE RESIDENCES BY SOLUM

DISCLAIMER: Reference to any measured area or definition is in accordance with International Property Measurement Standards (IPMS) published by the International Property Measurement Standards Coalition (IPMSC). The Net Internal Area comprises internal floor space and outdoor areas, excluding internal and external walls, and other structural elements. The Total Sellable Area encompasses all internal and external spaces, including all walls, columns and structural elements. Apartment designs and layouts presented are indicative and subject to change. The specifications are as of the brochure's preparation date and may be adjusted in accordance with permitted variances under apartment sale contracts. Floorplans are not to scale, provided for guidance only, and dimensions are approximate sizes.

Building B | Second Floor



B201 | 2BD

INTERNAL AREA (SQM)	57,21
EXTERNAL AREA (SQM)	
PRICE	SOLD

B202 | S

INTERNAL AREA (SQM)	27,06
EXTERNAL AREA (SQM)	
PRICE	106.000€

B203 | 1BD

INTERNAL AREA (SQM)	44,97
EXTERNAL AREA (SQM)	
PRICE	163.240€

B204 | 1BD

INTERNAL AREA (SQM)	44,50
EXTERNAL AREA (SQM)	
PRICE	163.240€

B205 | 1BD

INTERNAL AREA (SQM)	44,50
EXTERNAL AREA (SQM)	
PRICE	163.240€

B206 | 1BD

INTERNAL AREA (SQM)	44,96
EXTERNAL AREA (SQM)	
PRICE	SOLD

B207 | S

INTERNAL AREA (SQM)	27,06
EXTERNAL AREA (SQM)	
PRICE	SOLD

B208 | 2BD

INTERNAL AREA (SQM)	57,41
EXTERNAL AREA (SQM)	
PRICE	SOLD

B209 | 1BD

INTERNAL AREA (SQM)	44,50
EXTERNAL AREA (SQM)	
PRICE	SOLD

B210 | 1BD

INTERNAL AREA (SQM)	44,97
EXTERNAL AREA (SQM)	
PRICE	SOLD

B211 | S

INTERNAL AREA (SQM)	27,06
EXTERNAL AREA (SQM)	
PRICE	SOLD

B212 | 2BD

INTERNAL AREA (SQM)	57,46
EXTERNAL AREA (SQM)	
PRICE	SOLD

B213 | 2BD

INTERNAL AREA (SQM)	57,21
EXTERNAL AREA (SQM)	
PRICE	SOLD

B214 | S

INTERNAL AREA (SQM)	27,06
EXTERNAL AREA (SQM)	
PRICE	106.000€

B215 | 1BD

INTERNAL AREA (SQM)	44,97
EXTERNAL AREA (SQM)	
PRICE	163.240€

B216 | 1BD

INTERNAL AREA (SQM)	44,55
EXTERNAL AREA (SQM)	
PRICE	163.240€

PARKSIDE RESIDENCES BY SOLUM

DISCLAIMER: Reference to any measured area or definition is in accordance with International Property Measurement Standards (IPMS) published by the International Property Measurement Standards Coalition (IPMSC). The Net Internal Area comprises internal floor space and outdoor areas, excluding internal and external walls, and other structural elements. The Total Sellable Area encompasses all internal and external spaces, including all walls, columns and structural elements. Apartment designs and layouts presented are indicative and subject to change. The specifications are as of the brochure's preparation date and may be adjusted in accordance with permitted variances under apartment sale contracts. Floorplans are not to scale, provided for guidance only, and dimensions are approximate sizes.

Building B | Third Floor



B301 | 2BD

INTERNAL AREA (SQM)	57,21
EXTERNAL AREA (SQM)	
PRICE	SOLD

B302 | S

INTERNAL AREA (SQM)	27,06
EXTERNAL AREA (SQM)	
PRICE	SOLD

B303 | 1BD

INTERNAL AREA (SQM)	44,97
EXTERNAL AREA (SQM)	
PRICE	172.780€

B304 | 1BD

INTERNAL AREA (SQM)	44,50
EXTERNAL AREA (SQM)	
PRICE	172.780€

B305 | 1BD

INTERNAL AREA (SQM)	44,50
EXTERNAL AREA (SQM)	
PRICE	172.780€

B306 | 1BD

INTERNAL AREA (SQM)	44,97
EXTERNAL AREA (SQM)	
PRICE	SOLD

B307 | S

INTERNAL AREA (SQM)	27,06
EXTERNAL AREA (SQM)	
PRICE	SOLD

B308 | 2BD

INTERNAL AREA (SQM)	57,41
EXTERNAL AREA (SQM)	
PRICE	SOLD

B309 | 1BD

INTERNAL AREA (SQM)	44,50
EXTERNAL AREA (SQM)	
PRICE	SOLD

B310 | 1BD

INTERNAL AREA (SQM)	44,97
EXTERNAL AREA (SQM)	
PRICE	SOLD

B311 | S

INTERNAL AREA (SQM)	27,06
EXTERNAL AREA (SQM)	
PRICE	SOLD

B312 | 2BD

INTERNAL AREA (SQM)	57,41
EXTERNAL AREA (SQM)	
PRICE	SOLD

B313 | 2BD

INTERNAL AREA (SQM)	57,21
EXTERNAL AREA (SQM)	
PRICE	SOLD

B314 | S

INTERNAL AREA (SQM)	27,06
EXTERNAL AREA (SQM)	
PRICE	SOLD

B315 | 1BD

INTERNAL AREA (SQM)	44,97
EXTERNAL AREA (SQM)	
PRICE	SOLD

B316 | 1BD

INTERNAL AREA (SQM)	44,55
EXTERNAL AREA (SQM)	
PRICE	SOLD

PARKSIDE RESIDENCES BY SOLUM

DISCLAIMER: Reference to any measured area or definition is in accordance with International Property Measurement Standards (IPMS) published by the International Property Measurement Standards Coalition (IPMSC). The Net Internal Area comprises internal floor space and outdoor areas, excluding internal and external walls, and other structural elements. The Total Sellable Area encompasses all internal and external spaces, including all walls, columns and structural elements. Apartment designs and layouts presented are indicative and subject to change. The specifications are as of the brochure's preparation date and may be adjusted in accordance with permitted variances under apartment sale contracts. Floorplans are not to scale, provided for guidance only, and dimensions are approximate sizes.

Building B | Fourth Floor



B401 | 2BD

INTERNAL AREA (SQM)	56,87
EXTERNAL AREA (SQM)	
PRICE	238.500€

B402 | S

INTERNAL AREA (SQM)	27,06
EXTERNAL AREA (SQM)	
PRICE	121.900€

B403 | 1BD

INTERNAL AREA (SQM)	44,97
EXTERNAL AREA (SQM)	
PRICE	185.500€

B404 | 1BD

INTERNAL AREA (SQM)	44,50
EXTERNAL AREA (SQM)	
PRICE	185.500€

B405 | 1BD

INTERNAL AREA (SQM)	44,50
EXTERNAL AREA (SQM)	
PRICE	SOLD

B406 | 1BD

INTERNAL AREA (SQM)	44,97
EXTERNAL AREA (SQM)	
PRICE	185.500€

B407 | S

INTERNAL AREA (SQM)	27,06
EXTERNAL AREA (SQM)	
PRICE	SOLD

B408 | 2BD

INTERNAL AREA (SQM)	57,07
EXTERNAL AREA (SQM)	
PRICE	SOLD

B409 | 2BD

INTERNAL AREA (SQM)	84,05
EXTERNAL AREA (SQM)	
PRICE	349.800€

B410 | 3BD

INTERNAL AREA (SQM)	181,35
EXTERNAL AREA (SQM)	58,82
PRICE	1.007.000€

B411 | 1BD

INTERNAL AREA (SQM)	44,50
EXTERNAL AREA (SQM)	
PRICE	SOLD

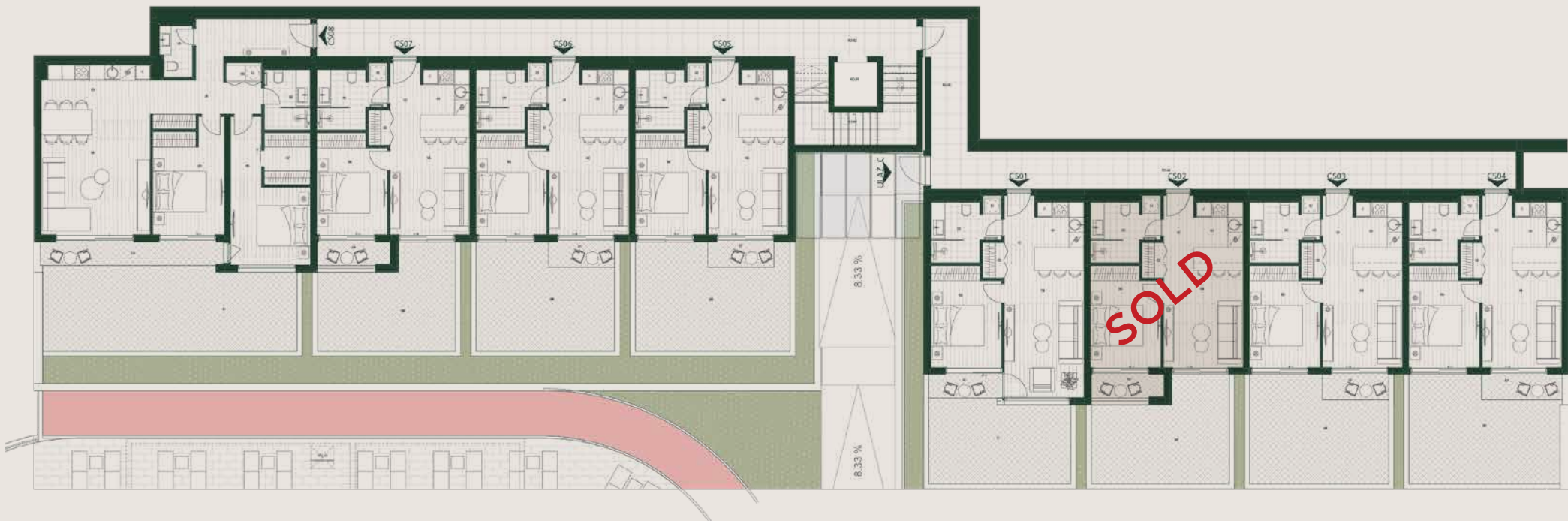
PARKSIDE RESIDENCES BY SOLUM

DISCLAIMER: Reference to any measured area or definition is in accordance with International Property Measurement Standards (IPMS) published by the International Property Measurement Standards Coalition (IPMSC). The Net Internal Area comprises internal floor space and outdoor areas, excluding internal and external walls, and other structural elements. The Total Sellable Area encompasses all internal and external spaces, including all walls, columns and structural elements. Apartment designs and layouts presented are indicative and subject to change. The specifications are as of the brochure's preparation date and may be adjusted in accordance with permitted variances under apartment sale contracts. Floorplans are not to scale, provided for guidance only, and dimensions are approximate sizes.

Building C



Building C | - Ground Floor



CS01 1BD	
INTERNAL AREA (SQM)	45,03
EXTERNAL AREA (SQM)	18,24
PRICE	174.900€

CS02 1BD	
INTERNAL AREA (SQM)	41,39
EXTERNAL AREA (SQM)	19,77
PRICE	SOLD

CS03 1BD	
INTERNAL AREA (SQM)	41,35
EXTERNAL AREA (SQM)	21,13
PRICE	169.600€

CS04 1BD	
INTERNAL AREA (SQM)	41,92
EXTERNAL AREA (SQM)	23,04
PRICE	169.600€

CS05 1BD	
INTERNAL AREA (SQM)	41,35
EXTERNAL AREA (SQM)	23,88
PRICE	169.600€

CS06 1BD	
INTERNAL AREA (SQM)	41,35
EXTERNAL AREA (SQM)	21,13
PRICE	169.600€

CS07 1BD	
INTERNAL AREA (SQM)	41,39
EXTERNAL AREA (SQM)	19,77
PRICE	169.600€

CS08 2BD	
INTERNAL AREA (SQM)	86,93
EXTERNAL AREA (SQM)	33,23
PRICE	339.200€

PARKSIDE RESIDENCES BY SOLUM

DISCLAIMER: Reference to any measured area or definition is in accordance with International Property Measurement Standards (IPMS) published by the International Property Measurement Standards Coalition (IPMSC). The Net Internal Area comprises internal floor space and outdoor areas, excluding internal and external walls, and other structural elements. The Total Sellable Area encompasses all internal and external spaces, including all walls, columns and structural elements. Apartment designs and layouts presented are indicative and subject to change. The specifications are as of the brochure's preparation date and may be adjusted in accordance with permitted variances under apartment sale contracts. Floorplans are not to scale, provided for guidance only, and dimensions are approximate sizes.

Building C | Ground Floor



C001 1BD		C002 1BD		C003 1BD		C004 1BD		C005 1BD		C006 1BD	
INTERNAL AREA (SQM)	44,97	INTERNAL AREA (SQM)	41,39	INTERNAL AREA (SQM)	45,39	INTERNAL AREA (SQM)	44,92	INTERNAL AREA (SQM)	44,92	INTERNAL AREA (SQM)	45,39
EXTERNAL AREA (SQM)		EXTERNAL AREA (SQM)		EXTERNAL AREA (SQM)		EXTERNAL AREA (SQM)		EXTERNAL AREA (SQM)		EXTERNAL AREA (SQM)	
PRICE	SOLD	PRICE	SOLD	PRICE	SOLD	PRICE	153.700€	PRICE	SOLD	PRICE	SOLD

C007 1BD		C008 2BD	
INTERNAL AREA (SQM)	41,39	INTERNAL AREA (SQM)	86,96
EXTERNAL AREA (SQM)		EXTERNAL AREA (SQM)	
PRICE	SOLD	PRICE	312.700€

PARKSIDE RESIDENCES BY SOLUM

DISCLAIMER: Reference to any measured area or definition is in accordance with International Property Measurement Standards (IPMS) published by the International Property Measurement Standards Coalition (IPMSC). The Net Internal Area comprises internal floor space and outdoor areas, excluding internal and external walls, and other structural elements. The Total Sellable Area encompasses all internal and external spaces, including all walls, columns and structural elements. Apartment designs and layouts presented are indicative and subject to change. The specifications are as of the brochure's preparation date and may be adjusted in accordance with permitted variances under apartment sale contracts. Floorplans are not to scale, provided for guidance only, and dimensions are approximate sizes.

Building C | First Floor



C101 1BD	
INTERNAL AREA (SQM)	44,98
EXTERNAL AREA (SQM)	
PRICE	159.000€

C102 1BD	
INTERNAL AREA (SQM)	41,39
EXTERNAL AREA (SQM)	
PRICE	SOLD

C103 1BD	
INTERNAL AREA (SQM)	45,39
EXTERNAL AREA (SQM)	
PRICE	SOLD

C104 1BD	
INTERNAL AREA (SQM)	44,92
EXTERNAL AREA (SQM)	
PRICE	163.240€

C105 1BD	
INTERNAL AREA (SQM)	44,92
EXTERNAL AREA (SQM)	
PRICE	SOLD

C106 1BD	
INTERNAL AREA (SQM)	45,39
EXTERNAL AREA (SQM)	
PRICE	163.240€

C107 1BD	
INTERNAL AREA (SQM)	41,39
EXTERNAL AREA (SQM)	
PRICE	148.400€

C108 2BD	
INTERNAL AREA (SQM)	86,96
EXTERNAL AREA (SQM)	
PRICE	328.600€

PARKSIDE RESIDENCES BY SOLUM

DISCLAIMER: Reference to any measured area or definition is in accordance with International Property Measurement Standards (IPMS) published by the International Property Measurement Standards Coalition (IPMSC). The Net Internal Area comprises internal floor space and outdoor areas, excluding internal and external walls, and other structural elements. The Total Sellable Area encompasses all internal and external spaces, including all walls, columns and structural elements. Apartment designs and layouts presented are indicative and subject to change. The specifications are as of the brochure's preparation date and may be adjusted in accordance with permitted variances under apartment sale contracts. Floorplans are not to scale, provided for guidance only, and dimensions are approximate sizes.

Building C | Second Floor



C201 | 1BD

INTERNAL AREA (SQM)	44,97
EXTERNAL AREA (SQM)	
PRICE	SOLD

C202 | 1BD

INTERNAL AREA (SQM)	41,40
EXTERNAL AREA (SQM)	
PRICE	159.000€

C203 | 1BD

INTERNAL AREA (SQM)	45,39
EXTERNAL AREA (SQM)	
PRICE	172.780€

C204 | 1BD

INTERNAL AREA (SQM)	44,92
EXTERNAL AREA (SQM)	
PRICE	172.780€

C205 | 1BD

INTERNAL AREA (SQM)	44,92
EXTERNAL AREA (SQM)	
PRICE	SOLD

C206 | 1BD

INTERNAL AREA (SQM)	45,39
EXTERNAL AREA (SQM)	
PRICE	SOLD

C207 | 3BD

INTERNAL AREA (SQM)	138,67
EXTERNAL AREA (SQM)	
PRICE	SOLD

PARKSIDE RESIDENCES BY SOLUM

DISCLAIMER: Reference to any measured area or definition is in accordance with International Property Measurement Standards (IPMS) published by the International Property Measurement Standards Coalition (IPMSC). The Net Internal Area comprises internal floor space and outdoor areas, excluding internal and external walls, and other structural elements. The Total Sellable Area encompasses all internal and external spaces, including all walls, columns and structural elements. Apartment designs and layouts presented are indicative and subject to change. The specifications are as of the brochure's preparation date and may be adjusted in accordance with permitted variances under apartment sale contracts. Floorplans are not to scale, provided for guidance only, and dimensions are approximate sizes.

Building C | Third Floor



C301 | 2BD

INTERNAL AREA (SQM)	85,61
EXTERNAL AREA (SQM)	
PRICE	360.400€

C302 | 1BD

INTERNAL AREA (SQM)	45,39
EXTERNAL AREA (SQM)	
PRICE	182.320€

C303 | 1BD

INTERNAL AREA (SQM)	44,92
EXTERNAL AREA (SQM)	
PRICE	182.320€

C304 | 1BD

INTERNAL AREA (SQM)	44,92
EXTERNAL AREA (SQM)	
PRICE	182.320€

C305 | 1BD

INTERNAL AREA (SQM)	45,39
EXTERNAL AREA (SQM)	
PRICE	182.320€

C306 | 2BD

INTERNAL AREA (SQM)	109,07
EXTERNAL AREA (SQM)	6,50
PRICE	530.000€

PARKSIDE RESIDENCES BY SOLUM

DISCLAIMER: Reference to any measured area or definition is in accordance with International Property Measurement Standards (IPMS) published by the International Property Measurement Standards Coalition (IPMSC). The Net Internal Area comprises internal floor space and outdoor areas, excluding internal and external walls, and other structural elements. The Total Sellable Area encompasses all internal and external spaces, including all walls, columns and structural elements. Apartment designs and layouts presented are indicative and subject to change. The specifications are as of the brochure's preparation date and may be adjusted in accordance with permitted variances under apartment sale contracts. Floorplans are not to scale, provided for guidance only, and dimensions are approximate sizes.

Building C | Fourth Floor



PARKSIDE RESIDENCES BY SOLUM

DISCLAIMER: Reference to any measured area or definition is in accordance with International Property Measurement Standards (IPMS) published by the International Property Measurement Standards Coalition (IPMSC). The Net Internal Area comprises internal floor space and outdoor areas, excluding internal and external walls, and other structural elements. The Total Sellable Area encompasses all internal and external spaces, including all walls, columns and structural elements. Apartment designs and layouts presented are indicative and subject to change. The specifications are as of the brochure's preparation date and may be adjusted in accordance with permitted variances under apartment sale contracts. Floorplans are not to scale, provided for guidance only, and dimensions are approximate sizes.